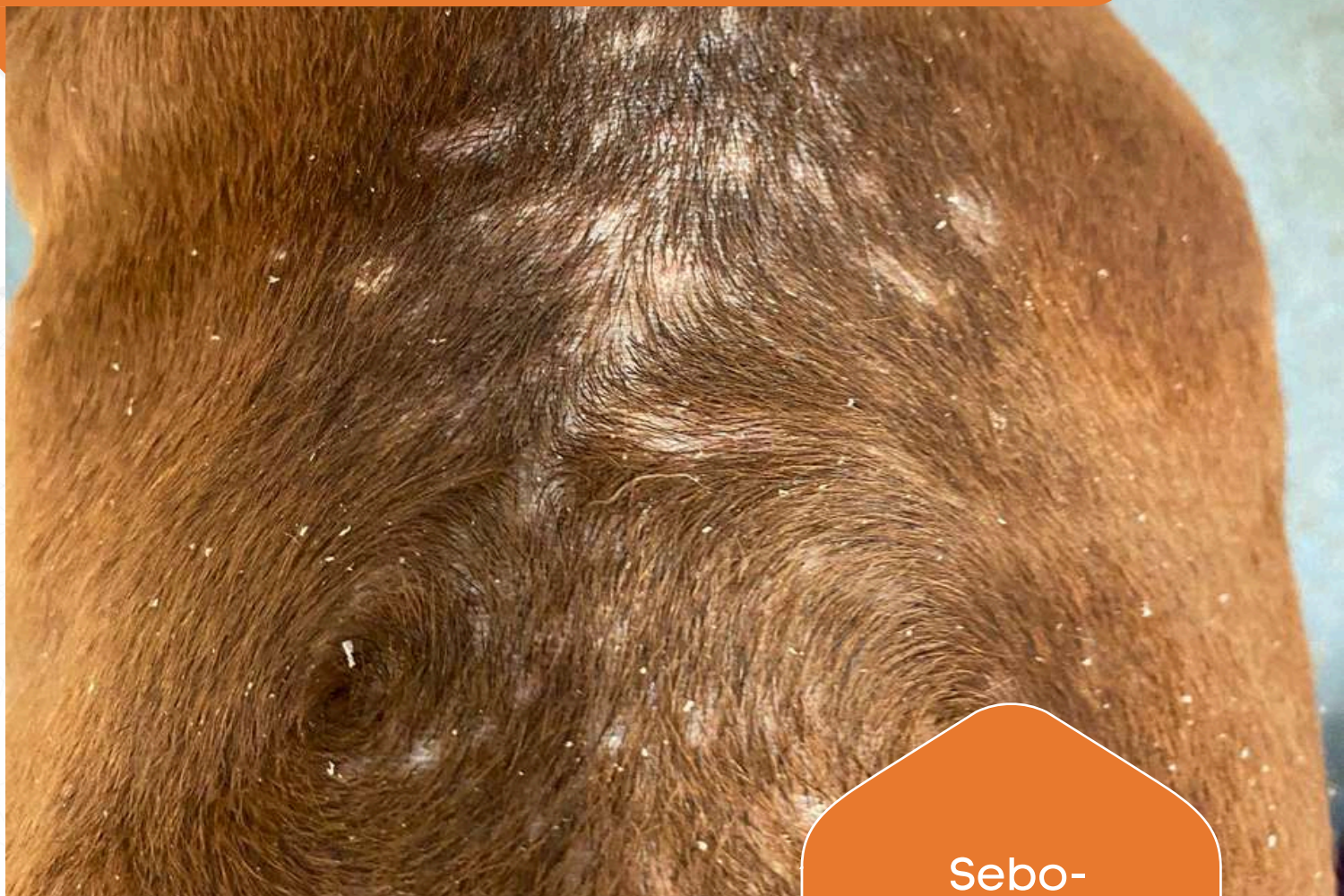


Essential 6 Skin Range



Sebo-
Regulating
Skin Range



ESSENTIAL 6 SPOT-ON



ESSENTIAL 6 Spot-On is an easy-to-use weekly spot-on therapy that helps regulate sebum production and restore proper skin barrier function. Containing natural oils and essential fatty acids, it helps restore moisture to the skin and reduce flaking. It also helps reduce odour and hair loss associated with kerato-seborrheic disorders. It contains a phyto bio-diffusing agent to ensure carriage to all areas of the body.

Contains:

- **Skin barrier & moisturising ingredients:** hemp seed oil rich in EFA
- **Sebo-regulating ingredients:** essential oils derived from rosemary, lavandin, clove, tea tree, ravintsara, peppermint, cedar, turmeric, oregano and gaultheria

Uses:

- ESSENTIAL-6 Spot On is for use on greasy, crusty and flaky skin
- It can be used alongside ESSENTIAL Shampoo and Mousse for daily management of the skin

Available in 3 sizes

- 0-10kg for cats & dogs
- 10-20kg for dogs
- 20-40kg for dogs



Directions for use

- Break the top of the pipette
- Part the coat on the back of the neck
- Apply the spot-on solution directly to the skin
- Do not massage in
- Do not bathe the coat for 48 hours
- Brush the coat after 24 hours



ESSENTIAL 6 SHAMPOO



ESSENTIAL 6 Sebo Shampoo is a soap-free, gentle soothing shampoo for deep cleansing of the coat in animals prone to greasy or crusty skin. With a very short 2-minute contact time to help improve owner compliance, ESSENTIAL 6 Shampoo helps eliminate odour and restore vibrancy to the coat. It is specially formulated with natural ingredients to moisturise dry skin and help restore proper skin barrier function.

Contains:

- **Cleansing ingredients:** lipoamino acids of green apples
- **Sebum-regulating ingredients:** essential oils derived from rosemary, lavandin, clove, tea tree, ravintsara, peppermint, cedar, turmeric, oregano, gaultheria and niaouli
- **Moisturising & barrier restoring ingredients:** hemp seed oil

Uses:

- ESSENTIAL 6 Shampoo is for use on greasy, crusty or flaky skin
- It can be used alongside ESSENTIAL 6 Spot-On and Mousse for complete management of the skin

Directions for use

- Wet the coat with Luke-warm water
- Apply the shampoo along the back of the animal
- Rub thoroughly through the coat
- Wait 2 minutes and rinse off
- Towel dry the coat
- Apply 1-2 times per week



Available in a 200ml bottle

ESSENTIAL 6 MOUSSE



ESSENTIAL 6 Mousse is an easy-to-use "dry shampoo" specifically developed for dogs and cats with dry, flaky or greasy skin. Its formula is rich in natural active ingredients with soothing and moisturising properties. It can be used to quickly and easily cleanse the coat to remove dander and thicker flakes of skin. It hydrates the skin and helps restore proper skin barrier function. ESSENTIAL 6 Mousse helps extend the duration between shampoos and does not need rinsing which improves owner compliance and ensure the product can be used frequently.

Contains:

- **Deodourising ingredients:** essential oil of niaouli and lichen extract
- **Cleansing ingredients:** lipoamino acids of green apple and a saponaria root extract to gently and effectively eliminate dirt and bad odors
- **Moisturising & barrier restoring ingredients:** hemp seed oil

Uses:

- ESSENTIAL Mousse is for use dry, flaky +/- or greasy skin
- It can be used alongside ESSENTIAL 6 Spot-On and Shampoo for complete management of the skin

Directions for use

- Apply the product into the palm of the hand
- Rub thoroughly through the coat
- Leave to dry
- Apply daily for frequent cleansing and in-between baths with ATOP-7 Shampoo



Available in a 150ml bottle

Clinical Evidence



[CLICK HERE](#)

Characterisation of the cutaneous microbiota of malodor in dogs and effect of a spot-on on the microbiota

Dr.C.Meason-Smith, Dr.C.E.Olde, Dr.R.Ocana et al
Veterinary Dermatology 2018



[CLICK HERE](#)

A case of sebaceous adenitis and mural folliculitis in a cat

Dr.K.Glos, Dr.S.Bettenay, Pr.R.Mueller, Dr.W.Von Bomhard
veterinary Dermatology 2016



[CLICK HERE](#)

Multicentric open study to assess the efficacy of a spot-on in domestic carnivores with karat-seborrheic disorders

Dr.E.Bensignor
PMCAC 2010

BONUS OFFERS

CLICK HERE



For a special free of charge bonus offer on the ESSENTIAL 6 skin range click the link above





Specialists in Dermatologicals

www.nextmune.com



Specialists in Allergy Testing
& Immunotherapy

www.nextmunelaboratories.co.uk

